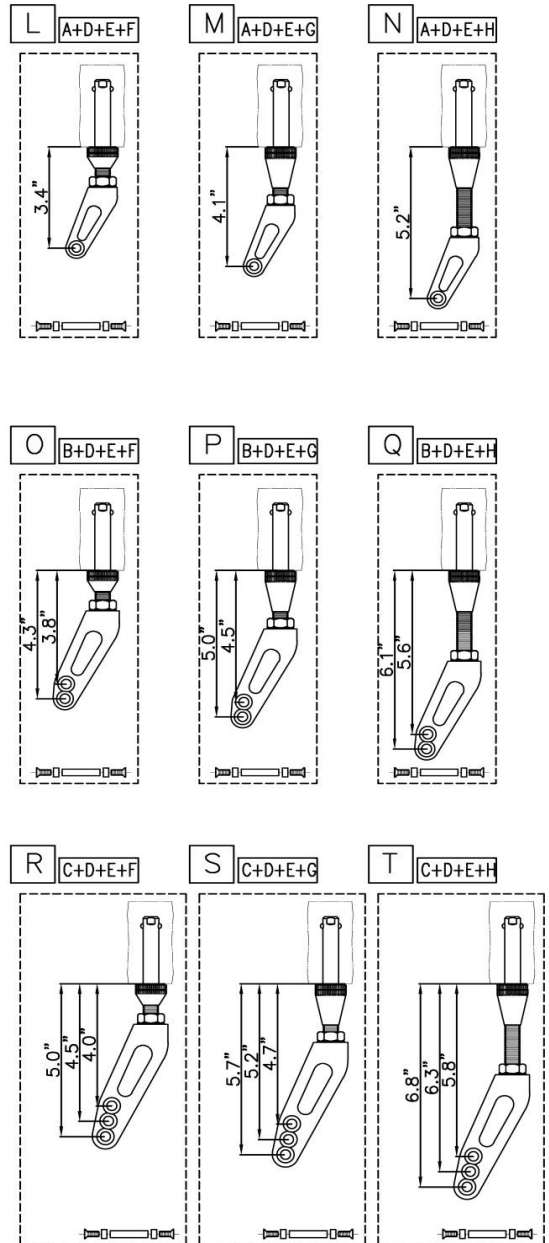
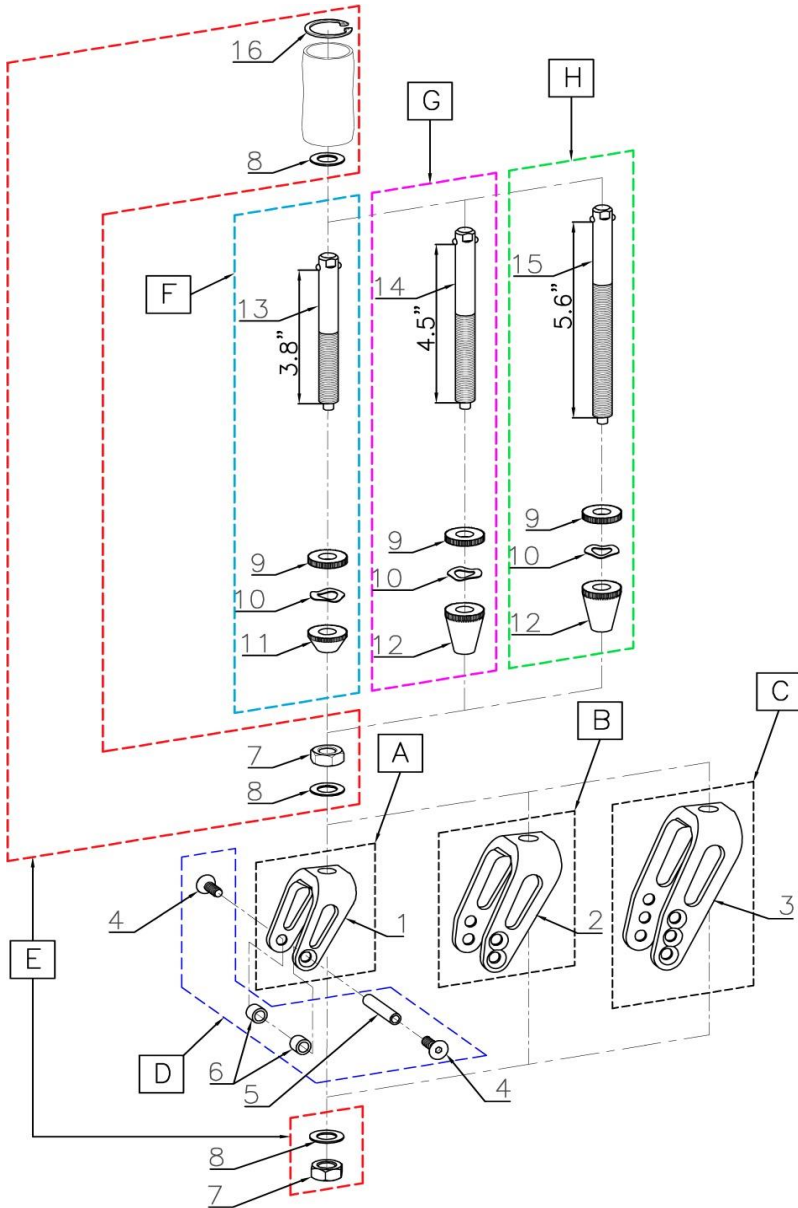


CASTER FORK w / Quick Release Axle

**COLOURS**  
IN MOTION

Ver. 2 02/08/24  
Section 1601



POS	Assy #	#	Parts #	QTY	Color	Remark	MSRP	NOTE	
A	-	1	0307-400	1	Blk	Short	per 1pcs	2pcs/chair	
B	-	2	0307-401	1	Blk	Med	per 1pcs	2pcs/chair	
C	-	3	0307-403	1	Blk	Long	per 1pcs	2pcs/chair	
D	1400-01D	4	0620-400	2	Sil	1/4"-28 L:3/4 SFHCS	per set	2sets/chair	
		5	0605-300	1	Sil	Front Caster Axle			
		6	0257-300	2	Sil	3/8" L:1/4" Spacer			
E	1600-01E	7	0121-300	2	Sil	1/2" -20 HN	per set	2sets/chair	
		8	0119-300	3	Sil	1/2" thin Washer			
F	1600-01F	16	0274-300	1	Blk	Snap Ring	per set	2sets/chair	
		9	0122-300	1	Blk	Knurl Nut - Small			
		10	0120-300	1	Sil	1/2" thin Wavy Washer			
		11	0123-400	1	Blk	Knurl Nut - Medium			
G	1600-01G	13	0012-302	1	-	Small Q.R. Axle	per set	2sets/chair	
		9	0122-300	1	Blk	Knurl Nut - Small			
		10	0120-300	1	Sil	1/2" thin Wavy Washer			
		12	0123-300	1	Blk	Knurl Nut - Tall			
H	1600-01H	14	0012-303	1	-	Medium Q.R. Axle	per set	2sets/chair	
		9	0122-300	1	Blk	Knurl Nut - Small			
		10	0120-300	1	Sil	1/2" thin Wavy Washer			
		12	0123-300	1	Blk	Knurl Nut - Tall			
			15	0012-304	1	-	Long Q.R. Axle		

POS	Assy #	#	Parts #	QTY	Color	Remark	MSRP	Note
L	1601-01L	-	-	1set	-	Short Fork & Short Q.R. Axle	per set	2sets/chair
M	1601-01M	-	-	1set	-	Short Fork & Med Q.R. Axle	per set	2sets/chair
N	1601-01N	-	-	1set	-	Short Fork & Long Q.R. Axle	per set	2sets/chair
O	1601-01O	-	-	1set	-	Med Fork & Short Q.R. Axle	per set	2sets/chair
P	1601-01P	-	-	1set	-	Med Fork & Med Q.R. Axle	per set	2sets/chair
Q	1601-01Q	-	-	1set	-	Med Fork & Long Q.R. Axle	per set	2sets/chair
R	1601-01R	-	-	1set	-	Long Fork & Short Q.R. Axle	per set	2sets/chair
S	1601-01S	-	-	1set	-	Long Fork & Med Q.R. Axle	per set	2sets/chair
T	1601-01T	-	-	1set	-	Long Fork & Long Q.R. Axle	per set	2sets/chair